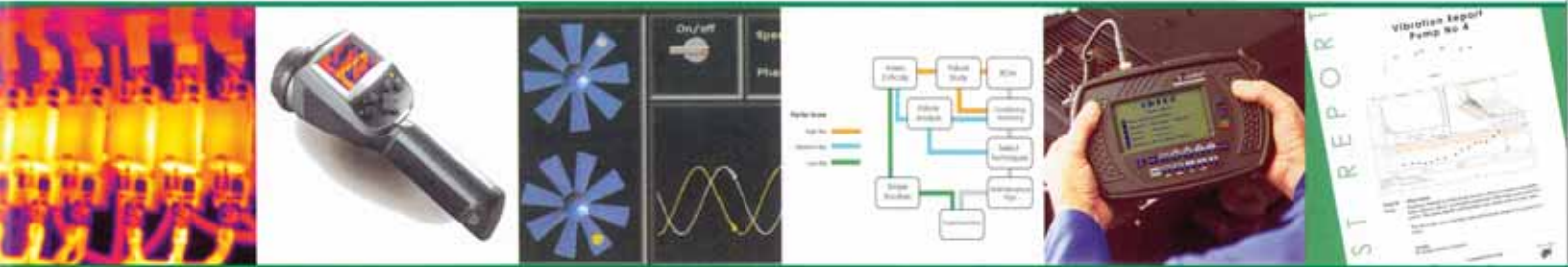


WHERE FAILURE IS NOT AN OPTION





INTEGRATED MAINTENANCE SOLUTIONS

IMPROVING THE BOTTOM LINE

Proviso Systems was established some 10 years ago to help industry change the way it performs maintenance by introducing innovative approaches to condition monitoring.

The company has grown rapidly and the advanced techniques within the 'Proviso Healthcheck' are now widely recognised as the way forward, ensuring as they do, a range of on-site diagnostic procedures, leading to early detection of wear and tear.

Our specialist engineers have a wealth of industrial experience which, when combined with the very latest monitoring technology, provides a solution to most maintenance problems. These include Critically Audits, Risk Based and Reliability Centred Maintenance Assessments, Condition Monitoring and Predictive Maintenance.

It is no coincidence that Proviso is now one of the premier service organisations in the UK, with a customer list that boasts many leading names in the food, manufacturing, brewing, mining and quarrying, aerospace, automotive, processing and general engineering markets.

From oil sampling, vibration measurement and analysis, through thermal scanning to hydraulic testing, Proviso Systems offers innovative management programmes guaranteed to improve plant and equipment efficiency, reduce maintenance costs and prevent breakdowns.

SERVICES

- Reliability Engineering
- Condition Monitoring Programmes
- Equipment Criticality Analysis
- Oil Sampling and Analysis
- Thermal Imaging Surveys
- Vibration Analysis
- Alignment
- Balancing
- Training
- RCM

PRODUCTS

- Vibration Data Collectors and Software
- Interactive Training Software
- Thermal Imaging Cameras
- Sensors and Systems
- On-Line Monitoring
- Accelerometers



RELIABILITY ENGINEERING

ASSET CONDITION ASSESSMENT AND RESTORATION

The principle objective of an Asset Assessment and Restoration programme is to bring equipment economically back to condition, with minimum disruption. During implementation, equipment is assessed and critical differences analysed. A structured process for restoring it to its optimum operating condition is then designed and implemented.

RELIABILITY CENTRED MAINTENANCE

The fundamental principle of Reliability Centred Maintenance (RCM) is to avoid or mitigate the consequences of failure. RCM is based on determining the balance between corrective and preventative maintenance to ensure that the equipment fulfils its intended function in its operating context. This methodology allows the consequences of each failure mode to be evaluated and provides decision logic to aid selection of the most appropriate maintenance technique.

TOTAL PRODUCTIVE MANUFACTURING

The main objective of Total Productive Manufacturing (TPM) is to maximise the effectiveness of the facilities that are used within the business by adopting a continuous improvement regime. TPM is an all embracing, results orientated/objectives driven approach for delivering business wide improvements through the optimisation of complete equipment

lifecycle management. Its focus creates flexible teamworking through the involvement of representatives from all departments associated with equipment purchase, installation, maintenance and operation.

PREDICTIVE MAINTENANCE COST BENEFITS

The true measure of effectiveness of an integrated predictive maintenance programme can be determined in several ways. Examples of this include increased machine availability, increased product quality, reductions in down time and avoidance of costly maintenance overtime. Proviso Systems are happy to assist their clients in designing and operating a cost benefit analysis programme, which will truly reflect the impact on their business.





PRODUCT PORTFOLIO HARDWARE, SOFTWARE, TRAINING & SUPPORT

The VB Series of vibration analysis equipment. Affordability without compromise

The VB Series along with Ascent software combines up to the minute technology with affordability. Comprising six models, each instrument is designed to be up and running in minutes and is supplied complete with:

- 5 years warranty
- Lifetime helpdesk support
- Comprehensive Ascent Software
- 12 hours free interactive training
- Balancing capability (4 models)

After comparing its cost and capability, the VB Series is rapidly becoming the first choice for maintenance professionals throughout the world.



Seamless integration of portable and on-line data collection

Balancing

VB1000-b A compact stand alone instrument which will solve any single or dual plane balance problem with ease.

Portable Instruments

VB1000 A single channel instrument that will solve both balance and vibration problems.

VB2000 A dual channel instrument offers extra power and convenience to solve both 2 plane balance and vibration problems.

VB3000 A comprehensive dual channel instrument enhanced by the Inclusive Level 2 - Ascent Software Surveillance Systems

VB-Online A multiple channel, ethernet based surveillance system for those more critical assets - Includes Ascent Software Level 3

Setting the standard for affordable on-line surveillance systems.

The VB-Online monitoring system provides 24/7 round the clock surveillance for your critical assets. It is a flexible modular systems that is constantly and automatically evaluating your data, notifying when potential problems arise, thus avoiding costly downtime.



The system utilises 16 or 32 channel modules which may be interconnected to your existing network via a standard (wired or wireless) Ethernet connection. Each module is flexible enough to accept a range of field inputs giving a true indication of the condition of your equipment.

The VB-Online works hand in hand with the proven Ascent Software and can be used in conjunction with any of the VB range of portable instruments.

Some of the key features include

- OPC data acquisition compliance
- Web browser technology
- Email and text message alert
- SQL/HTML reporting



INTERACTIVE TRAINING

VIBRATION ANALYSIS AND ALIGNMENT

Mastering Vibration Monitoring.

With our iLearn interactive training products you are embarking on a lifelong training and resource programme that will become invaluable to you and your organisation's development.

iLearnVibration – Practice Makes Perfect

This interactive training resource is not limited to one single user and includes a range of modules to advance your knowledge and understanding of condition monitoring and vibration analysis.

The course includes over 7.5 hours of narration, 400 quiz questions and over 1800 slides, together with a series of modules to aid your development, including :-

50 case histories, a Virtual Test Rig, a Machine Fault calculator, with bearing database and the new Reference Center.

Thousands of people are already using iLearn Interactive software in over 60 countries.

iLearnAlignment

Misalignment is one of the leading causes of premature machine failure.

iLearnAlignment will teach you how perform shaft alignment with dial indicators and laser systems in a self-paced, interactive format that guarantees that new concepts and difficult procedures are fully understood.

When shafts are correctly aligned, bearing life is extended, energy consumption reduced and product quality improved.



THERMAL IMAGING CAMERAS

Whether viewing electrical systems, carrying out maintenance inspections or checking process installations, thermal imaging is without doubt the most effective predictive maintenance instrument available – quickly and accurately locating problems prior to system failure.

We are dedicated UK agents for the Fir range of infrared thermography cameras. With over 30,000 units currently being used on predictive maintenance applications world-wide and a range of innovative software packages for reporting, analysing and organising captured images, it's no wonder Fir is a world leader.

We offer the full Fir range of instruments including -

ThermaCAM B Series

An extremely affordable range of infrared cameras, specially developed for building diagnostic applications including: the detection of air leaks, heat losses, areas of moisture, leaking pipes and for pinpointing locations where overheating is occurring. They are also ideal for Building Inspectors to detect construction failures and building/insulation abnormalities

These cameras have been specially calibrated for the building industry (-20°C to +55°C) and include a range of powerful features including a built in 17mm lens, interchangeable optics, an in-camera automatic dew point identification alarm.



ThermaCAM E series

Fitting in the palm of your hand, these affordable, high performance cameras include everything you need from an infrared camera.

Ideal for electrical inspections, general predictive maintenance applications and for when there is a need for instant infrared troubleshooting.

They deliver unmatched temperature measurement accuracy, thermal sensitivity of 0.10°C and clear noise-free images.



ThermaCAM E320

In co-operation with its customers, FIR systems has further developed its successful ThermoCAM E-series range.

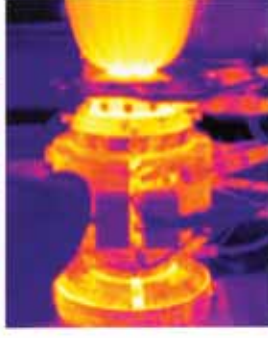
The result is the E320. Now, you will see even sharper infrared images (320 x 240 pixels) on the high-resolution LCD display. Fitting in the palm of your hand, the E320 offers non-contact temperature measurement, crisp thermal imaging, in-field image analysis and storage, and both qualitative and quantitative post-analysis and reporting.

The ThermoCAM E320 is the only camera that offers you practically all the possibilities of a high range infrared camera at an affordable price.

Easier and quicker inspections thanks to powerful features:

- **Sound and colour alarms:** the operator can set a maximum temperature in the camera. If the E320 is pointed at an object and this temperature is exceeded, the camera will produce an audible and/or a visible alarm.
- **Movable crosshair:** a joystick allows moving the crosshair for temperature measurement on any pixel in the IR image. A considerable advantage over having just one fixed spot in the middle.
- **Automatic cold or hot spot:** the E320 automatically detects the coldest or the hottest spot in the infrared image.

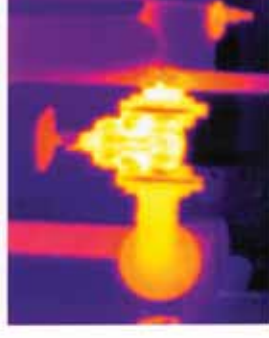
See what infrared can do for you



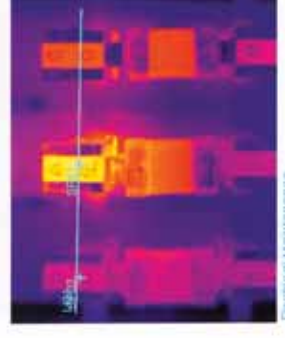
Process Control
Expanded Polystyrene Extrusion



Building Services
Find hot spots due to poor insulation

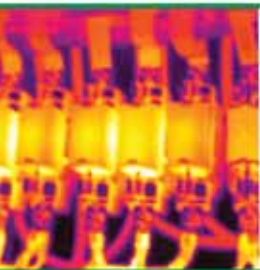


Machinery Maintenance
Safety Valve Inspection



Electrical Maintenance
High Resistance Connection





Proviso Systems Ltd

Everton Road, Mattersey,

Doncaster, South Yorkshire DN10 5DS

Tel. 01777 817536 Fax. 01777 816045

Email. sales@proviso-systems.co.uk

www.proviso-systems.co.uk



INVESTOR IN PEOPLE

